

GEOiDX Software suite

GEOiDX brochure page 1 of 4

"Globalisation and efficiency, both are present in our bespoke product range."

GEO Software made by professionals for professionals in: building constructions, residential building, road construction, project development, construction consultancy, real estate, civil engineering, local and government institution, installation, upholstery business, interior finishing, roofing, building maintenance and facility management

Measuring, calculating, visualising and management

With the GEOiDX software you comfortably take-off and visualize quantities. On average time saving is 80% compared to traditional methods. You perform take-offs from digital drawings (bmp, jpeg, plt, pdf, 2- and 3D dxf, dwf or dwg format).

YOU'RE NOT AN ACROBAT, ARE YOU?

With the new GEOiDX software, you will achieve the maximum from your precious time without bone breaking issues. Taking off quantities has never been so easy and reproducible.

KNOWING BY MEASURING

That is why GEOiDX offers you a collection of additional features for easy and transparent information management.

What 80% time saving brings you

For a start you have more time to spend on sharp biddings and you have more control over the cost-estimation costs and you have more time to estimate the risks.

With GEOiDX you do not only save time while taking off quantities, you also gain time on other aspects of your work. For example the ability to instantly reproduce whilst in a meeting about quantities. Or the graphical presentations used by the project leader to comfortably make his point. Shall we continue with the next point?

Practical well balanced software

Because you are not interested in ballast. The GEOiDX features reflect your daily work the best way possible. Measure and edit functions speak for themselves and add to the intuitive character of the software. The result can be used in many ways. You may copy or export the result to your spreadsheet or cost-estimating software, filter totalise, print or save it as DXF, DWG, MS Excel or PDF file.



Collaboration in GEOiDX style

Because information is displayed as meant by the author enabling clear communication and where decisions are supported by facts. The easy GEOiDX-Viewer, enables you to present information on a tray. Professional? No doubt about that, but even more fun to do.

The GEOiDX-Menu an ingenious tool

A collection of frequently used functions gathered on a digital A4 format sized menu that can be operated comfortably by mouse or multitouch-stylus. The GEOiDX-Menu offers room for amongst others measure and edit functions, memory functions, location names and cost-estimation codes but also functions to comfortably operate your spreadsheet or cost-estimation software. You may define an unlimited number of GEOiDX-Menus for example per building type or builder's specification. Each menu may contain multiple tabsheets, providing you with enough space to include your construction or maintenance elements.

GEOiDX SOFTWARE SUITE OFFERS YOU

- Intuitive working method;
- MS Windows looks en feel;
- Project orientated;
- Import of u.a. bmp, jpeg, plt, pdf, 2- and 3D dxf, dwf or dwg format drawings;
- Advanced measuring status displaying all quantities;
- GEOiDX-Menu for quickened operation of (measuring) functions;
- Import of your own MS Excel cost-estimation;
- And much more!

Does our bespoke GEOiDX software also suit you?

GEO offers several ways for you to determine whether the GEOiDX software anticipates on your daily praxis. You may [download the GEOiDX software](#) and try it for free, or you may take part in a free of charge information day using your own drawings.

GEOiDX Software suite

GEOiDX brochure page 2 of 4

GEOiDX

Software for the cost-estimator for whom flexibility is important. GEOiDX offers all that is required to take-off quantities from digital drawings as well as working in a team

For whom?

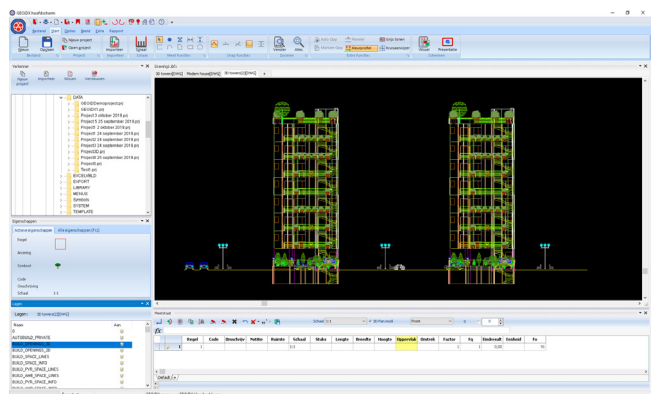
For anyone who needs fast and accurate quantity inventory and a uniform solution to manage and distribute construction information.

Import functions

- Import of bmp, jpeg, plt, dwf, PDF, 2- and 3D dxf and dwg files.
- Import of IFC files (2020);
- Import of your Excel cost-estimation (2020).

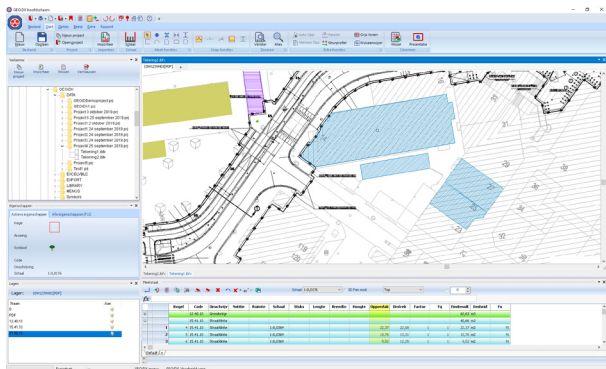
Special functions amongst others

- Very advanced user definable measuring table with relative cell references;
- Copying, cutting, pasting, changing, deleting and grouping of results;
- The GEOiDX-Menu a collection of frequently used cost-estimation codes with linked measuring function, colour etc. You can devise cost-estimation codes across several tabsheets;
- Special functions for quick roof take-offs.



HOW DOES GEOiDX WORK?

GEOiDX is a program that provides the functionality to take-off quantities, add descriptive information to them and present the complete project graphically. Calculations and textual information can be assembled in transparent reports. Further on, data from those reports can be exported to spreadsheet or cost-estimating software. You may comfortably add (quantity) information from sub-contractors to your own report. The graphical presentation is automatically updated with a legend, project information and your company logo to function as a presentation drawing, thematic drawing or task chart.



Filing functions Drawing and measuring table

- Printer; plotter; clipboard; DXF, DWG, PDF, CSV, XLS(X) and XML.

Report amongst others

- Overview to filter, sort and totalize information from drawings;
- Export or copy result lines to your spreadsheet or cost-estimation software;
- Saving amongst others as MS EXCEL folder including formulas.

Presentation amongst others

- Inserting legend, project information and company logo;
- Several drawing and text functions.

GEOiDX-Viewer

Quick and comfortable exchange of GEOiDX data with others.

System requirements

Minimum Intel i5 or higher, 8Gb RAM, Mouse and wide TFT screen; MS Windows 7, 8 or 10.

See also: [GEOiDX in the Cloud](#); [Visit our Facebook page!](#)

WHAT GEOiDX OFFERS YOU

You can use GEOiDX as PC, network or Cloud application.

Measuring functions amongst others

- Measuring and drawing pieces, length, arc, width, height and surfaces of polygons, rectangles and circles from digital drawing;
- Absolute and relative scaling in one or two directions and scaling, based on reference points.

GEOiDX Software suite

GEOiDX brochure page 3 of 4

GEOiDX-Menu

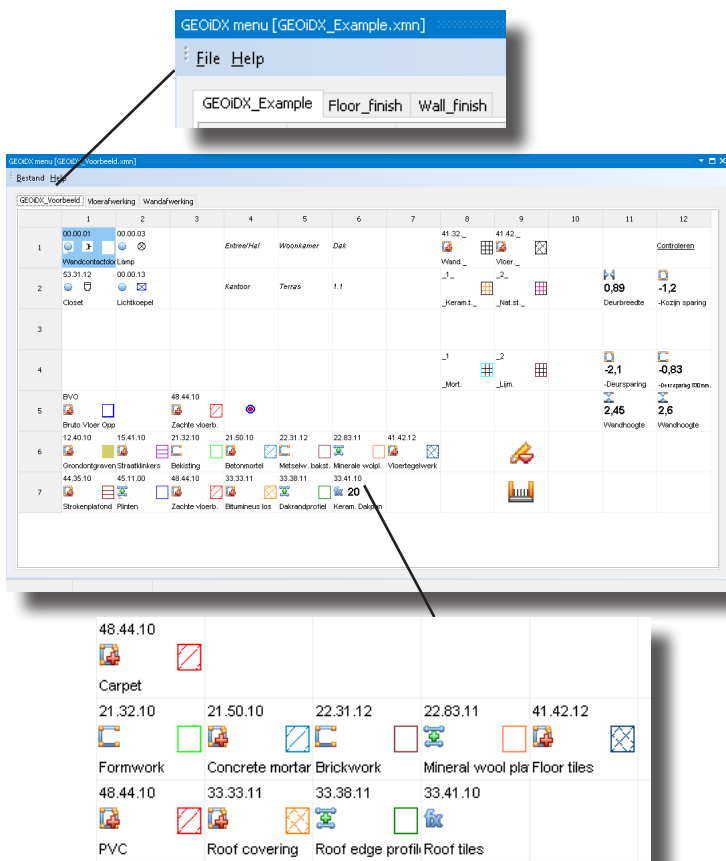
A very sophisticated and time saving library of frequently used functions. Functions are activated with just one mouse click. You may divide the GEOiDX-Menu as you please. Each menu may include multiple tab sheets, to group functions by cost-estimation section, construction part, material or labour category.

For whom?

For everyone who wants to work with GEOiDX even faster. Moreover the use of the GEOiDX-Menu improves uniformity within your cost-estimation department.

HOW DOES THE GEOiDX-MENU WORK?

After you filled the GEOiDX-Menu with needed information, you click onto a cell in the menu. That is all, GEOiDX does the rest for you like activating a measuring function, cost-estimation code, colour and hatch, a pre-set value or factor or a combination of all these options.



MORE ABOUT THE GEOiDX-MENU

How many cells may a GEOiDX-Menu tab sheet have?

A tab sheet may contain 720 cells. Most users however use 216 cells divided over 18 columns and 12 rows for a 22 inch screen. You may compose an unlimited amount of tabsheets per menu. You may divide each tab sheet to your needs and extend it if required. We advise to include frequently used functions like cost-estimation coding to save manual input and prevent mistakes.

Combine functions! Combining functions saves even more time. The GEOiDX-Menu offers you the following functions to include in cells:

- Cost-estimation code. The cost-estimation code can also be constructed by means of partial coding up to five levels deep. The advantage of partial coding is that you require less cells because you build up the cost-estimation code while selecting cells;
- Measuring functions and functions that are related to the take-off process like scale, +/-, Enter-key;
- Symbol for Pieces;
- Line- and area type, thickness, colour and hatch;
- Room names;
- A pre-set value or factor. The value is linked to the measuring function in the cell and therefore included in the similar column from the measuring table. Factor is a pre-set value that is included in the column Factor in the measuring table;
- Exportset and functions related to the controls of your cost-estimation software.

Copy, paste and cut

Filling cells goes amazingly fast, but you can speed up this process by simply copying and pasting cells and only changing the cost-estimation code and colour/hatching.

Second screen

Do you use two screens? In that case you can position the GEOiDX-Menu on the second screen and activate cells even quicker.

GEOiDX Software suite

GEOiDX brochure page 4 of 4

GEOiDX-VIEWER

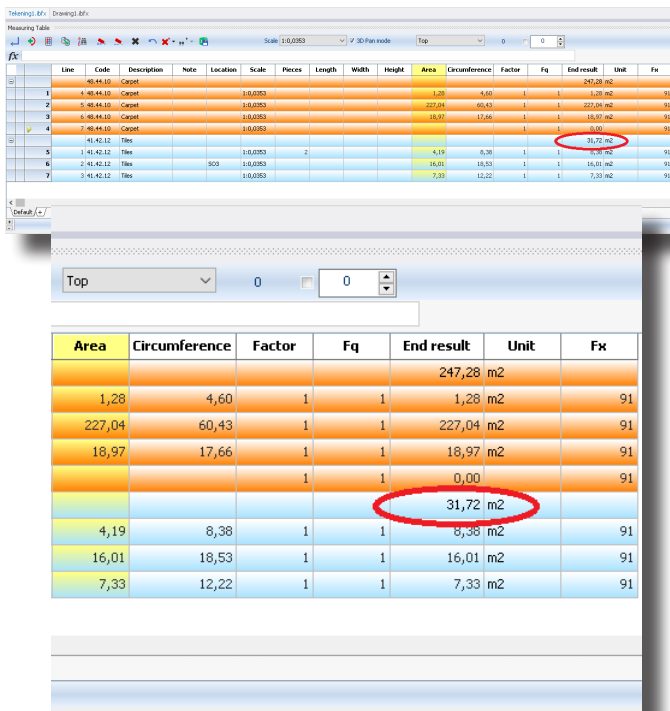
Exchange quantity information in a uniform and time saving way. The quantity information including the linked graphical elements are displayed as meant by the author.

For whom?

For everyone who wants to exchange GEOiDX information with others. The GEOiDX-Viewer is supplied to you free of charge .

HOW DOES GEOiDX-VIEWER WORK?

The GEOiDX-Viewer displays the information as composed with the licensed GEOiDX software. The author selects the desired GEOiDX drawings and adds them to a so-called WebProject. Then the author applies certain set of rights to each of the drawings. Finally, the author sends the WebProject, clicking at the special Send per mail button. Alternative, the WebProject can be uploaded on the Intranet or Internet. The receiver opens the WebProject in the GEOiDX-Viewer to view the GEOiDX data.



The screenshot shows the GEOiDX-Viewer software interface. At the top, there is a menu bar and a toolbar. Below the toolbar, there is a table with columns: Line, Code, Description, Note, Location, Scale, Pieces, Length, Width, Height, Area, Circumference, Factor, Fq, End result, Unit, and Fx. The table contains several rows of data, with some cells highlighted in red. A red circle highlights the value '31,72 m2' in the 'End result' column of the 5th row. Below the table, there is a section with a dropdown menu set to 'Top' and a numerical input field set to '0'. Below this, there is another table with columns: Area, Circumference, Factor, Fq, End result, Unit, and Fx. This table also contains several rows of data, with the value '31,72 m2' in the 'End result' column of the 5th row highlighted by a red circle.

| Line | Code | Description | Note | Location | Scale | Pieces | Length | Width | Height | Area | Circumference | Factor | Fq | End result | Unit | Fx |
|------|------|-------------|-------|----------|---------|--------|--------|-------|--------|--------|---------------|--------|----|------------|------|----|
| 1 | 4 | 85,44,10 | Capot | | 1:0,000 | | | | | 1,28 | 4,60 | 1 | 1 | 1,28 m2 | 91 | |
| 2 | 5 | 85,44,10 | Capot | | 1:0,000 | | | | | 227,04 | 60,43 | 1 | 1 | 227,04 m2 | 91 | |
| 3 | 6 | 85,44,10 | Capot | | 1:0,000 | | | | | 18,97 | 17,66 | 1 | 1 | 18,97 m2 | 91 | |
| 4 | 7 | 85,44,10 | Capot | | 1:0,000 | | | | | | | 1 | 1 | 0,00 | 91 | |
| 5 | 1 | 41,42,12 | Tiles | | 1:0,000 | | | | | 4,19 | 8,38 | 1 | 1 | 31,72 m2 | 91 | |
| 6 | 2 | 41,42,12 | Tiles | 500 | 1:0,000 | 2 | | | | 16,01 | 18,53 | 1 | 1 | 16,01 m2 | 91 | |
| 7 | 3 | 41,42,12 | Tiles | | 1:0,000 | | | | | 7,33 | 12,22 | 1 | 1 | 7,33 m2 | 91 | |

| Area | Circumference | Factor | Fq | End result | Unit | Fx |
|--------|---------------|--------|----|------------|------|----|
| | | | | 247,28 | m2 | |
| 1,28 | 4,60 | 1 | 1 | 1,28 | m2 | 91 |
| 227,04 | 60,43 | 1 | 1 | 227,04 | m2 | 91 |
| 18,97 | 17,66 | 1 | 1 | 18,97 | m2 | 91 |
| | | 1 | 1 | 0,00 | | 91 |
| | | | | 31,72 | m2 | |
| 4,19 | 8,38 | 1 | 1 | 8,38 | m2 | 91 |
| 16,01 | 18,53 | 1 | 1 | 16,01 | m2 | 91 |
| 7,33 | 12,22 | 1 | 1 | 7,33 | m2 | 91 |

GEOiDX-VIEWER OFFERS YOU

You may use GEOiDX-VIEWER as PC , network or Cloud application.

General amongst others

- Viewing GEOiDX data;
- Viewing o.a. DWF, DWG, DXF and PDF files;
- Add comments;
- Save GEOiDX drawing;
- Build and send a WebProject.

Author funtions amongst others

- Granting rights regarding reading GEOiDX data (default); editing measurement lines; adding comments (default) and adding measurement lines;
- Apply password protection for every drawing included in the WebProject;
- Accept comments from third parties.

Special functions amongst others

- The comment (redline) function provides the opportunity to add comments to existing texts in the Code, Description, Location and Note fields. The comment added is distinctly displayed in red;
- Changing the status of comment. Depending on the preferences, comment can be accepted (i.e. it replaces the text in the field) or discarded..

WebProject functions amongst others

- Selecting GEOiDX drawings to include in the WebProject;
- Removing GEOiDX drawings from the WebProject;
- WebProject packing/unpacking;
- Sending the WebProject by clicking at the special Send per mail button.

System requirements

Minimum Intel i5 or higher, 8Gb RAM, Mouse and wide TFT screen; MS Windows 7, 8 or 10.

See also: [GEOiDX in the Cloud](#); [Visit our Facebook page!](#)